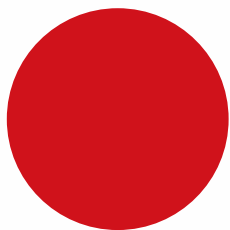


KAMIYA



FULL HEIGHT DOOR®  
MADE IN JAPAN

# F/S FULL STEALTH

FULL HEIGHT DOOR® is an innovative door which customers can finish it as they like. For example, they can put wallpaper on it or paint it.

The door of the photograph was finished into a door expressing Japanese culture by pasting a wall paper printed Ukiyo-e, which is a famous Japanese classic art, on the door.

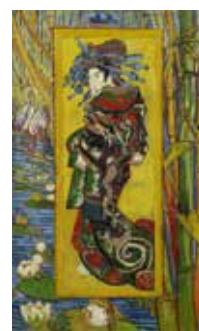


葛飾北斎  
Hokusai KATSUSHIKA

富嶽三十六景（神奈川沖浪裏）  
"Fugaku 36 Kei (off the coast of Kanagawa)"

Author:Hokusai KATSUSHIKA  
Woodblock print made around 1830.

Hokusai traveled around Japan and made the woodblock prints describing the landscape of 36 places where Mt. Fuji could be seen. This is one of those woodblock prints described dynamic sea and Mt. Fuji seen from Yokohama. This is popular in Europe and there is a famous story that the painter Van Gogh praised this woodblock print with a letter addressed to his younger brother Theo.



Vincent Willem van Gogh  
japonaiserie : Oiran (1887)





三世大谷鬼次の江戸兵衛  
"Sansei Ootani Oniji no Yakkodobei"

## 東洲斎写楽

Syaraku TOUSHUUSAI

"Yakkodobei" acted by the third-generation Ootani Oniji

Author: Sharaku TOUSHUUSAI

Woodblock print around 1794

This woodblock print described the figure of a villain called "Yakkodobei" acted by the third generation of the Kabuki actor, Ootani Onij in a kabuki performance.

Although the actor's prints at that time are like a popular actor's pictures current fans buy, Sharaku's works were made by an innovative method enlarging the face so called "Ookubi-e" at that time. And the big nose and the wrinkles on the face were described faithfully, so it was very unpopular among not only fans but also actors.



寛政三美人  
"Kansei Sanbijinn"

## 喜多川歌麿

Utamaro KITAGAWA

"Kansei Sanbijinn"

Author: Utamaro KITAGAWA

Woodblock print made around 1793.

Ukiyo-e that is described three women, renowned as beauty.

The woman on the left is "Ohisa" who is a daughter of the sweet shop, the middle is "Okita" who is a cafe clerk, and the right is "Toyohina" who is a geisha known as a good singer.

It is interesting that three women whose situation and profession are totally different and whose common points are only "beautiful" are described in one print.

The rumors of the three beautiful women were spread out all over Tokyo by the Utamaro's print and they gained popularity.

# FIVE QUEENS

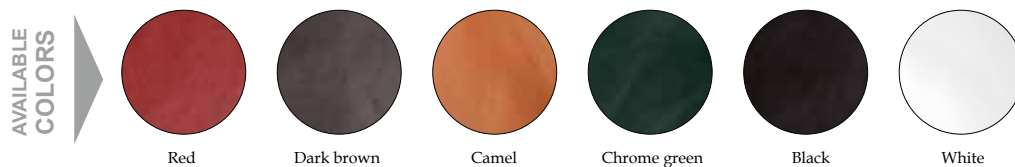
Cow leather door

革



## Five cows

FIVE QUEENS was made with genuine leather for being the best. Five cows are necessary to make a single door. Leather goods such as sofas, shoes and bags are always present around us however the doors that wear leather are rare. The natural cowhide with luxurious feeling promises the highest satisfaction.







# Zenstyle

Lattice door design

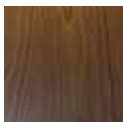
# 禅



TYPE:ZK-1  
WOOD:Black Walnut

The lattice doors do not cut off the space completely and they have been used as a useful partition while being a functional beauty door symbolizing Japanese culture. KAMIYA Corporation made Kizure-Koushi in the golden ratio. Kizure-Koushi is the simplest grid pattern among a number of methods. Although ZENSTYLE is a traditional Japanese style so called “WA”, it directs the luxury space by its modern design.

AVAILABLE  
COLORS



Black Walnut



Black Cherry



Beautiful handle with hammered finished pattern

花々が咲き誇る春、緑鮮やかな夏、  
紅葉が彩りを添える秋、純白の雪が舞う冬。



Spring where flowers are in full bloom, green bright summer  
Autumn leaves add color to it, winter in which white snow dances



ZK-1



ZK-1



# ASH

# 檜



ASH has been loved by changing its shape to furniture, flooring and other various wood products while using its beautiful wood grain. We arrange the paint finish to express the beauty of the board like real trees.



Wiped off immediately after painting white, finished in a mat using a powder scratch technique to emphasize wood grain by leaving a color only in the grain.



## KAMIYA×Sugatakatachi

It is the collaboration with a full-height door and a solid wooden handle. The combination with the hand-carved handle to fit in hand pleasantly creates comfortable space.



### The imagery of " the gesture "

Beautiful forms are born from the figure of a person trying to live everyday beautifully.  
By designing the shape, we want to make the manners of users beautiful.  
This is the meaning of the brand name of "Sugatakatachi".



JF-1



JG-1



JG-2



TYPE:AG-3  
COLOR:Silent Black

### Pet-friendly light flap

Clear flaps realize comfortable entry and exit using 1mm thick polycarbonate so that no burden is imposed on pets passing through. Also, for unexpected impacts, CARO is designed to make the flap disengageable so you can use it with confidence.



### SMART ENTRANCE

"Smart Entrance" is a fashionable and futuristic handle that can complete "opening the door by unlocking" with only one action of "touch".





# 愛 Caro

Petdoor

It is a FULL HEIGHT DOOR® for important pets who are friends and also a member of family.



AG-1  
size S



AG-2  
size M



AG-3  
size L



# Automatic Door

Automatic door for general household

進



Automatic door for residential that opens and closes just by holding hand over sensor embedded in wall.  
Daily petit luxury and comfortable living.



## Make your daily life easier, more comfortable Your life will change

### Convenient

Even though both hands are occupied  
Easily open and close



### Safe and Secure

Even if you hit the door  
automatic return!



- Operate smoothly simply by holding your hand over the sensor.
- Even if the sensor is not used, when you apply a light force in opening direction, the assist function works and the door fully opens and closes automatically.
- When accidentally caught the safety return function works immediately to open the door automatically.
- If there is an obstacle in the path of the door and the door hits the obstacle, the door automatically stops and remembers the stop position with its safety function. And when the door comes to the same position next time, the function works and stops the door there.
- In case of a power failure you can operate manually like a normal sliding door.

KAMIYA CORPORATION Co.,Ltd  
Shonan Factory and Sales Office

50 Suzukawa,Isehara-city,Kanagawa 259-1146,Japan

Mail [contacts\\_en@fullheight-door.com](mailto:contacts_en@fullheight-door.com)

Please use this e-mail address for inquiries on this products.

[fullheight-door.com](http://fullheight-door.com)



FULL HEIGHT DOOR®  
Premium Line "KRONE"



## What is KAMIYA?

KAMIYA is one of the few specialized makers of interior doors in Japan.

Our "FULL HEIGHT DOOR®" is a high-quality product which was born  
from the technology and design power of Japan.

In the Japanese market of interior doors with a height of over 2,000mm,  
we have the largest share.



MADE IN JAPAN



